

MONTHLY MEMBERSHIP PROGRESS REPORT

LOCATION MONTANA

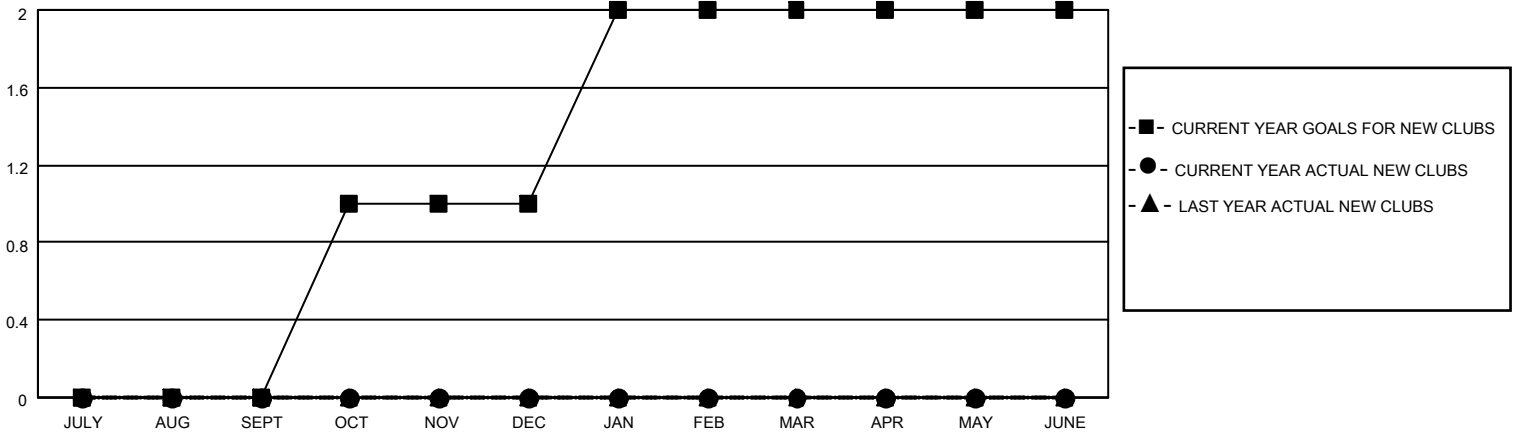
District 37

Results as of: 6/30/2023

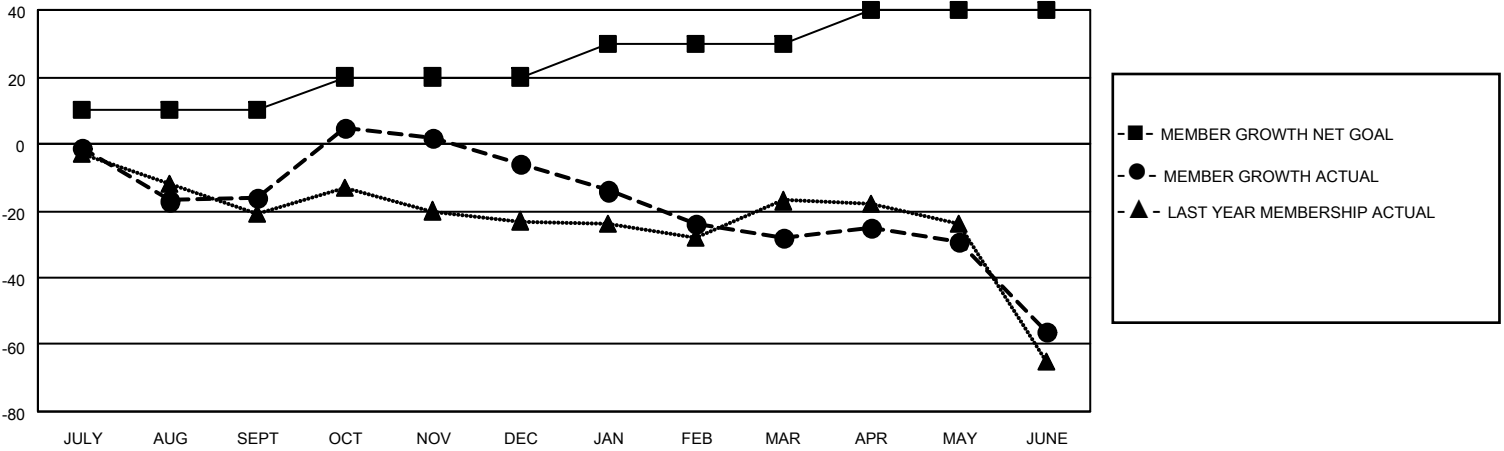
Clubs			
RESULTS FOR 2022-2023			
QUARTER	NEW CLUB GOAL	NEW CLUBS	DROPPED CLUBS
JULY/AUG/SEPT	0	0	1
OCT/NOV/DEC	1	0	0
JAN/FEB/MAR	1	0	0
APR/MAY/JUNE	0	0	0

Members			
RESULTS FOR 2022-2023			
QUARTER	MEMBER GROWTH NET GOAL	MEMBER GROWTH ACTUAL	DROPPED MEMBERS ACTUAL (including transfers)
JULY/AUG/SEPT	10	30	43
OCT/NOV/DEC	10	60	47
JAN/FEB/MAR	10	33	53
APR/MAY/JUNE	10	49	58

GOALS AND ACTUAL NEW CLUBS CUMULATIVE



GOALS AND ACTUAL MEMBERS CUMULATIVE



DROPPED CLUBS: 1

39 CLUBS OF 61 ADDED 1 OR MORE NEW MEMBERS

GENDER DISTRIBUTION

MALE	1,042 (68.55%)
FEMALE	478 (31.45%)
NON BINARY	0 (0.00%)
PREFER NOT TO ANSWER	0 (0.00%)

DROPPED MEMBERS

[CLICK HERE FOR CUMULATIVE MEMBERSHIP DATA](#)

DECEASED	27
CLUB CANCELLED	26
OTHER	151
TOTAL	204

TOTAL FAMILY UNIT MEMBERS	281
FAMILY MEMBERS PAYING HALF DUES	140